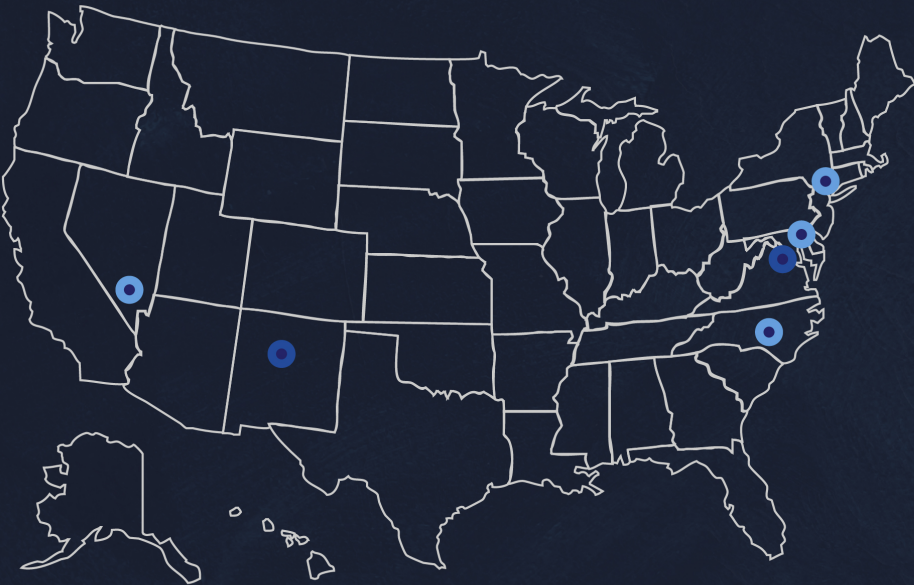


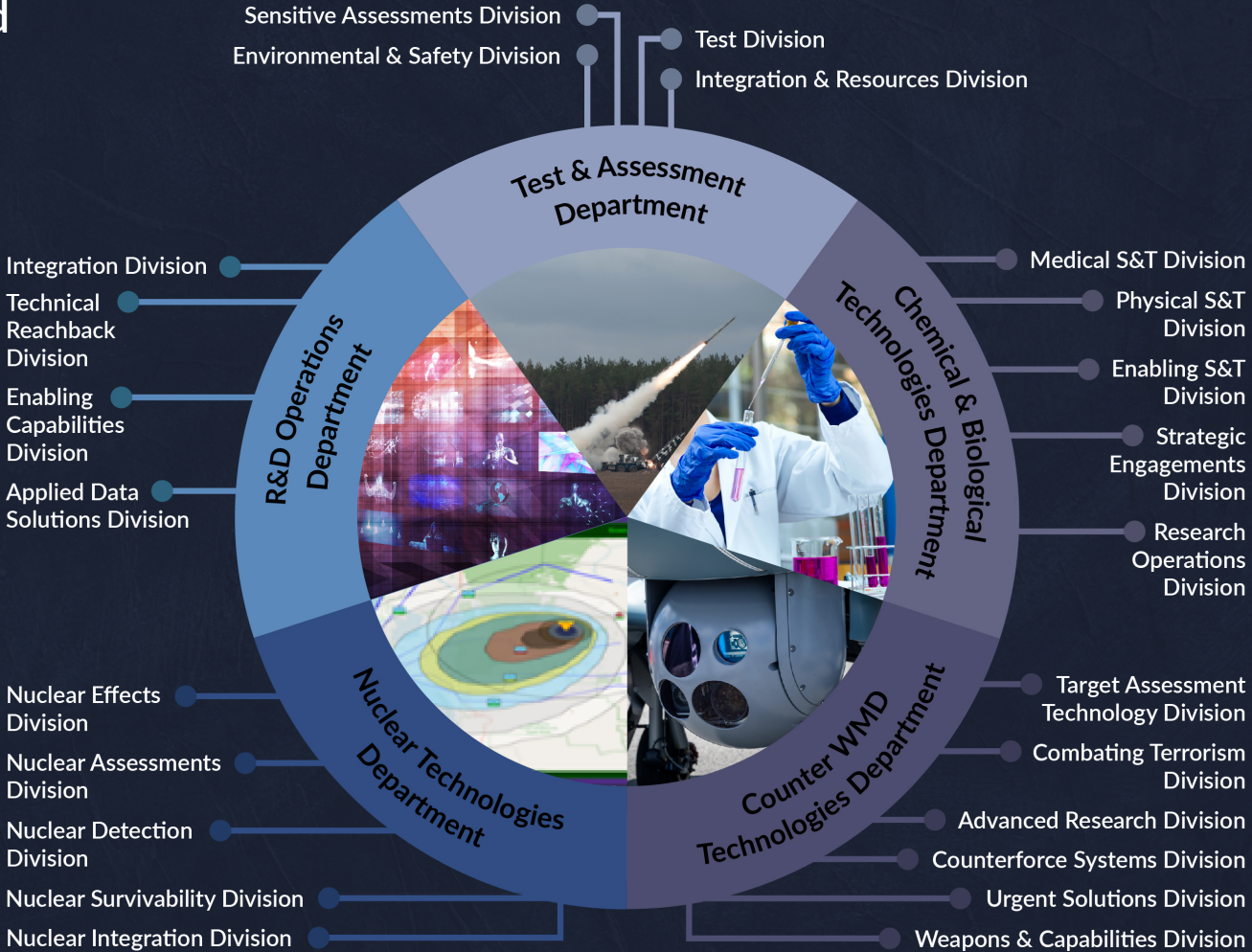
# The Research & Development Directorate (RD)

generates customer focused, threat informed, trusted technical solutions to deter and counter critical WMD problems for today and tomorrow.

RD executes its mission by delivering innovative solutions that meet current mission requirements in a timely manner and by anticipating and preparing for emerging and future threats with a balance of fundamental and applied research across the portfolio.

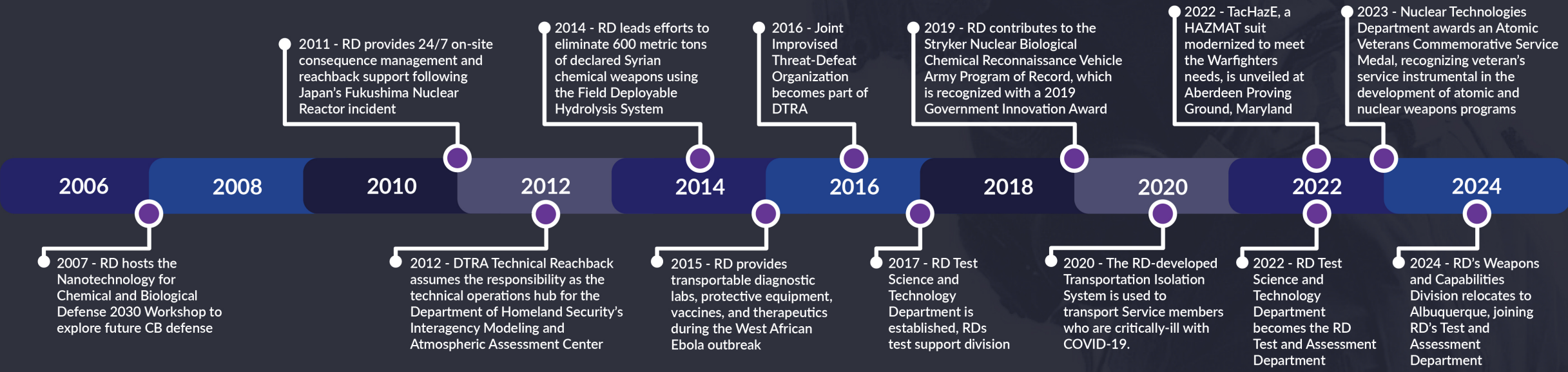


- Primary DTRA RD Locations (Fort Belvoir, VA and Kirtland AFB, NM)
- Additional Workforce Locations (West Point, NY; Las Vegas, NV; Fort Liberty, NC; and Edgewood/Aberdeen Proving Ground, MD)





# DTRA RD Timeline



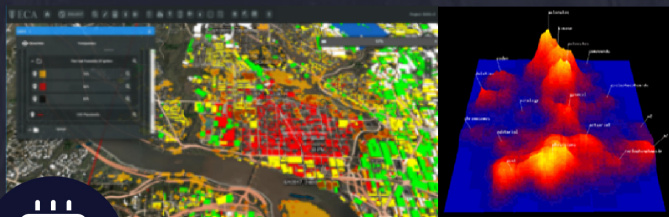
Radiation Detection Capabilities



Full-Spectrum Testbed Capabilities



Vaccine & Therapeutic Development



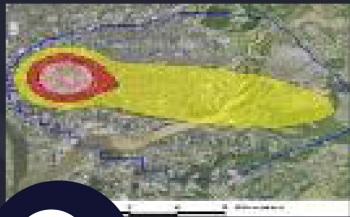
Artificial Intelligence, Machine Learning, & Data Science Software Development



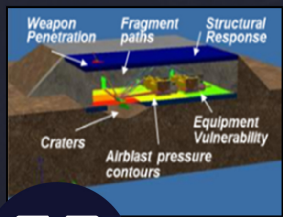
Prophylactic & Medical Countermeasure Wearables



CBRNE Subject Matter Expertise



Hazard Modeling & Post Event Analysis Capabilities



Weapons Effects & Targeting Capabilities

