

UNCLASSIFIED



DEFENSE THREAT REDUCTION AGENCY

DTRA Research and Development 101

APPROVED For Public Release

Deter. Prevent. Prevail.

UNCLASSIFIED



Agenda

- Leadership and Organization
- Mission and Functions
- RD Departments
 - Chemical and Biological Technologies
 - Counter WMD Technologies
 - Nuclear Technologies
 - Test and Assessment
 - Operations
- Conclusion



UNCLASSIFIED

RD Leadership

**Dr. James
"Ben" Petro**
RD Director



**COL
Matthew
Moakler**
RD Deputy
Director



**Mr. Carl
Brown**
RD Chief of
Staff

DEPARTMENT LEADERSHIP



CHEM-BIO TECHNOLOGIES (RD-CB(JSTO))
Dr. Robert Kristovich
RD-CB(JSTO), Director



CWMD TECHNOLOGIES (RD-CX)
Ms. Amanda Richardson
RD-CX, Director



NUCLEAR TECHNOLOGIES (RD-NT)
Mr. Marc Franciszkowicz
RD-NT, Director



R&D OPERATIONS (RD-OP)
Mr. Dustin Eward
RD-OP, Chief

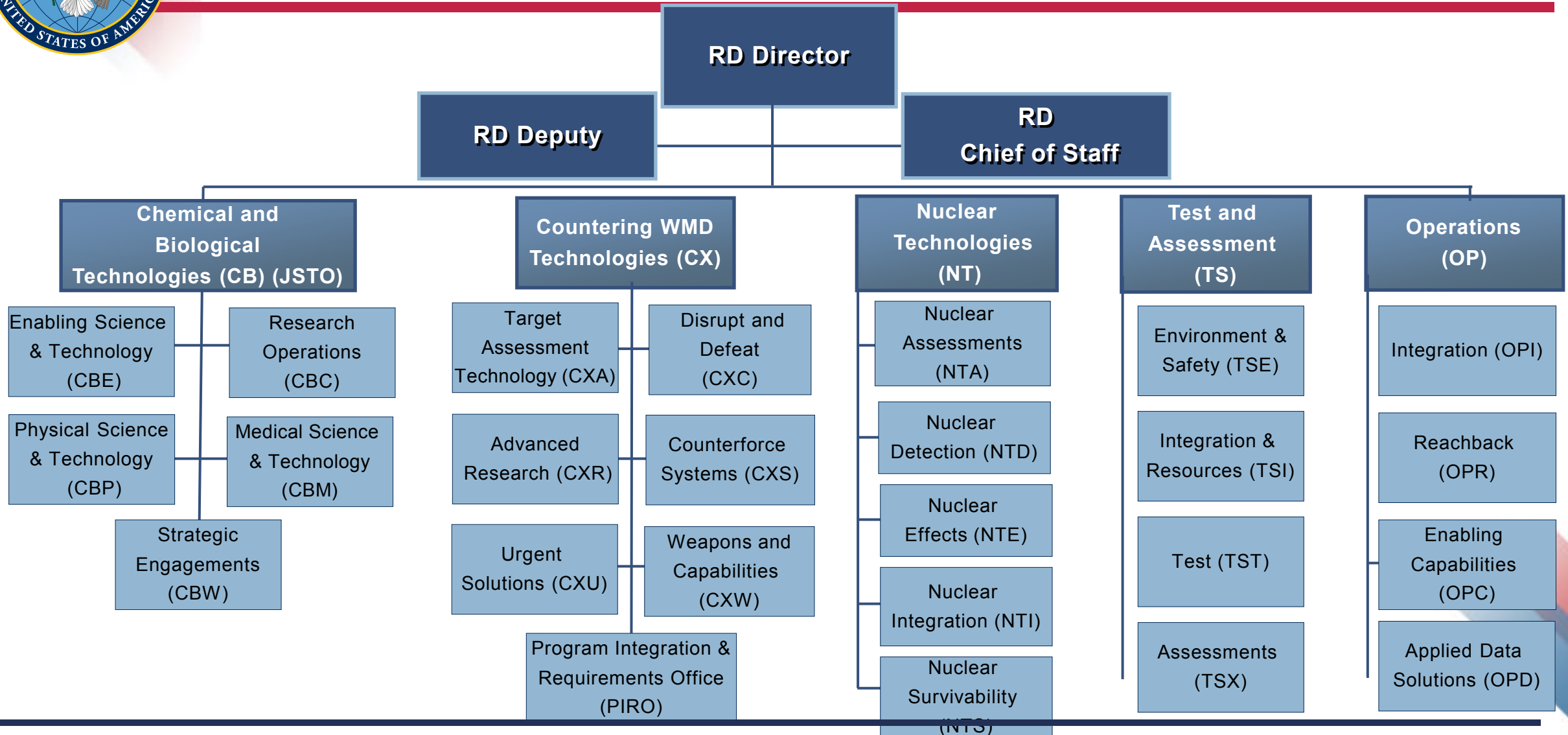


TEST AND ASSESSMENT (RD-TS)
Dr. Gary Hook
RD-TS, Chief



UNCLASSIFIED

RD Organization



Deter. Prevent. Prevail.

UNCLASSIFIED



RD Workforce Locations



Some Additional Workforce Locations

West Point, NY; Las Vegas, NV; Fort Liberty, NC; and Edgewood/Aberdeen Proving Ground, MD



UNCLASSIFIED

RD Mission and Functions

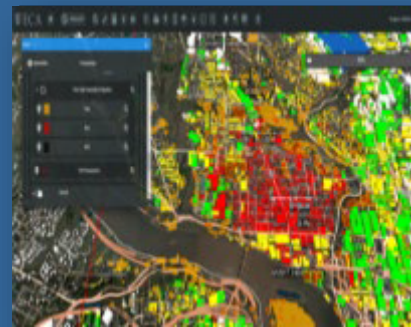
Generate customer focused, threat informed, trusted technical solutions to deter and counter critical WMD problems for today and tomorrow.



RD-CB: Chemical
and Biological
Technologies (JSTO)



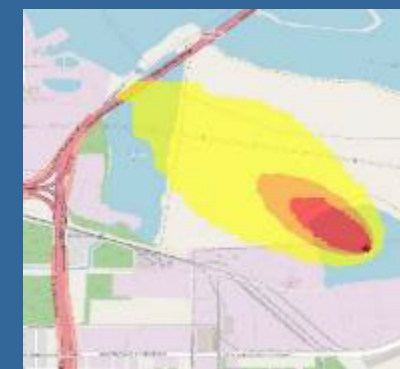
RD-CX: Counter
WMD Technologies



RD-NT: Nuclear
Technologies



RD-TS: Test and
Assessment



RD-OP: Operations

RD executes its mission by DELIVERING INNOVATIVE SOLUTIONS that meet current mission requirements in a timely manner and by ANTICIPATING AND PREPARING FOR EMERGING AND FUTURE THREATS with a balance of fundamental and applied research across the portfolio.

Deter. Prevent. Prevail.

UNCLASSIFIED



RD Strategic Partnering

RD partners with other U.S. Government agencies (such as National and Service Laboratories), and international S&T organizations to develop CWMD capabilities that address prioritized CCMD / Joint Force gaps.

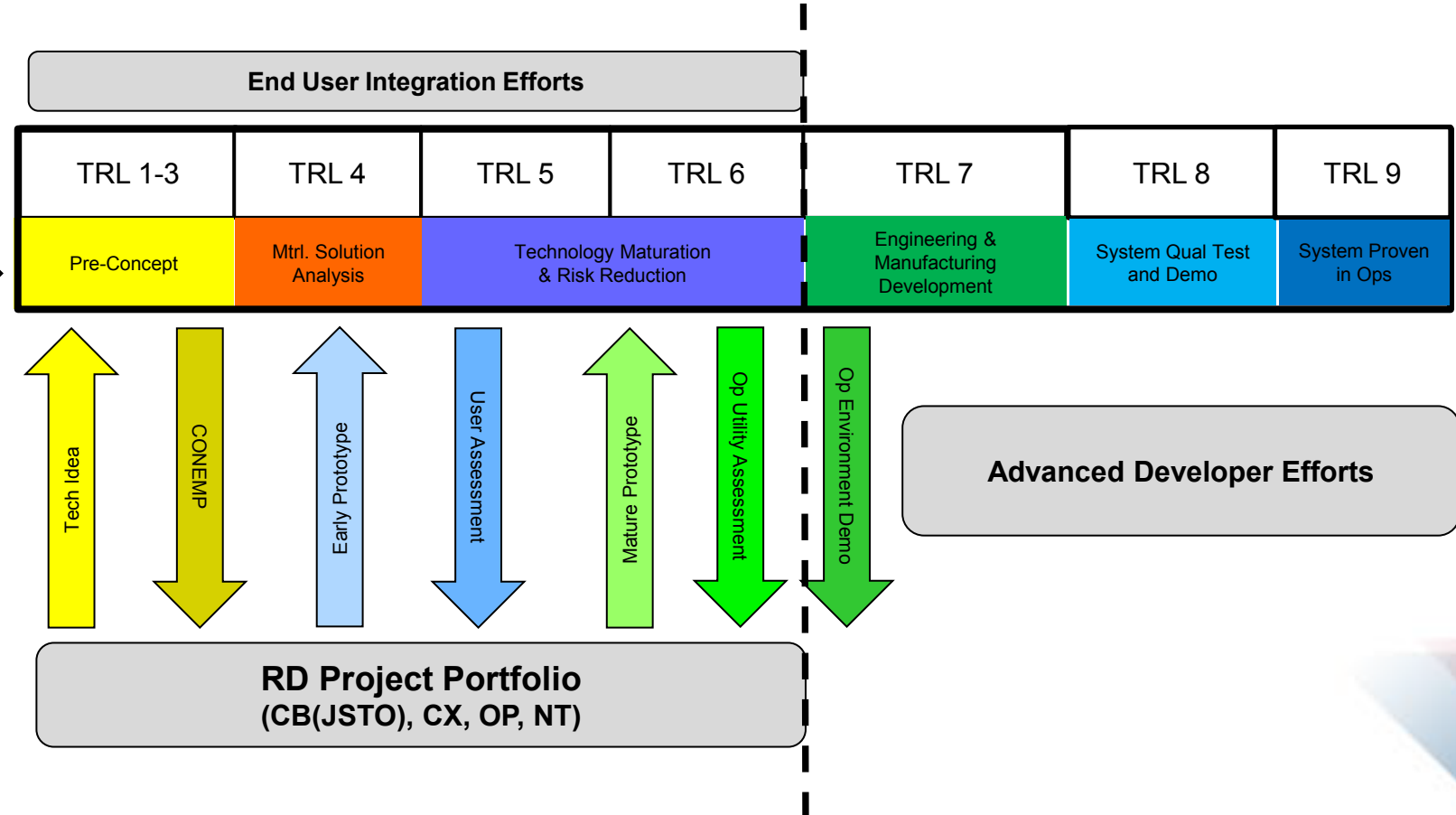




RD Technology Readiness Levels



DTRA request for support process



TRL- Technology Readiness Level



UNCLASSIFIED

RD-CB(JSTO): Chemical and Biological Technologies Department



RD-CB(JSTO) leads DoD S&T to anticipate future threats and deliver technology, knowledge, and concepts that enable the Joint Force to fight and win in CB contested environments.

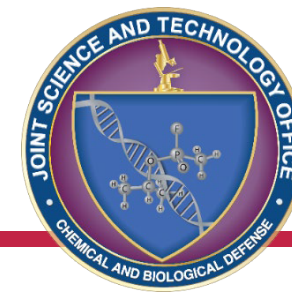


Top CB priorities include Medical S&T; Physical S&T; Enabling S&T; and Strategic Warfighter Engagements in alignment with DASD(CBD)'s *CBDP Science Objectives and Technology Focus Areas*.



UNCLASSIFIED

RD-CB(JSTO): Chemical and Biological Technologies Department



Medical S&T Division

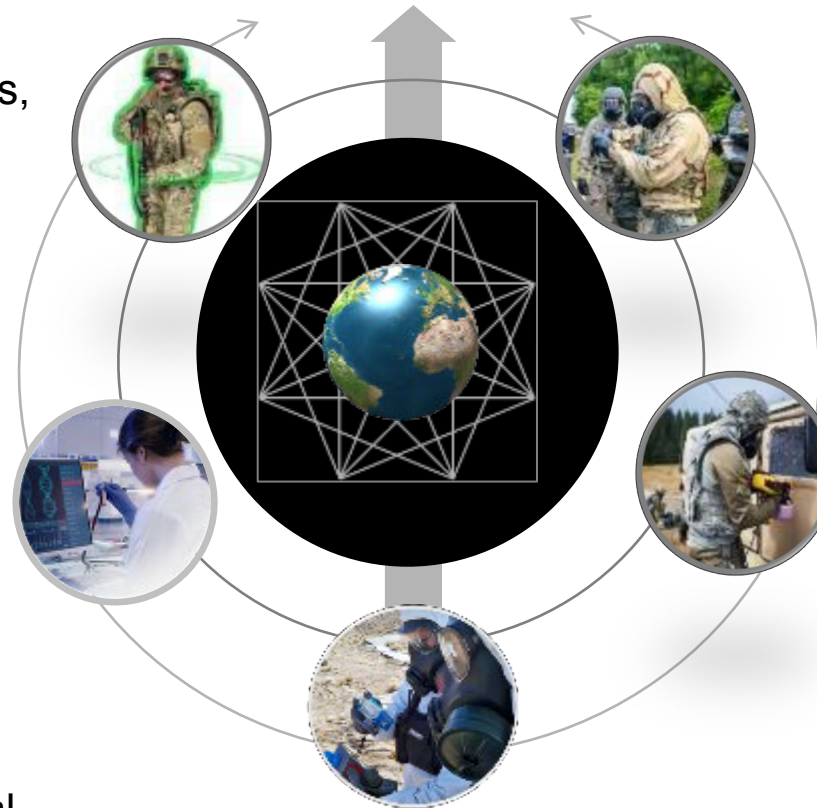
Develops vaccines, therapeutics, diagnostics, and other innovative capabilities to prevent, mitigate, and eliminate chemical and biological threats inside the body.

Physical S&T Division

Develops innovative technologies for detecting, identifying, and mitigating chemical and biological threats outside of the body.

Enabling S&T Division

Conducts innovative research to produce critical data and knowledge, supporting the development of capabilities against chemical and biological threats and operations in a chemical or biological threat environment.



Strategic Engagements Division

Leads organizational strategy development, communications, and partnerships within the CBDP Enterprise and engagements with the military services and labs and drives technology experimentation to address chemical and biological threats.

Research Operations Division

Manages JSTO's internal processes, including planning, budgeting, acquisition, policy, human resources, and administration.



UNCLASSIFIED

RD-CX: Counter WMD Technologies Department

RD-CX develops, demonstrates, and transitions innovative technologies and capabilities to actively counter the full spectrum of adversary activities across the WMD continuum.



CWMD Mission Domain



Top CX priorities include automated advanced target development; counter WMD analysis; hardened and deeply buried targets; target assessment; counterforce systems; and disruption of WMD logistics and production networks.



UNCLASSIFIED

RD-CX: Counter WMD Technologies Department

Target Assessment Technology

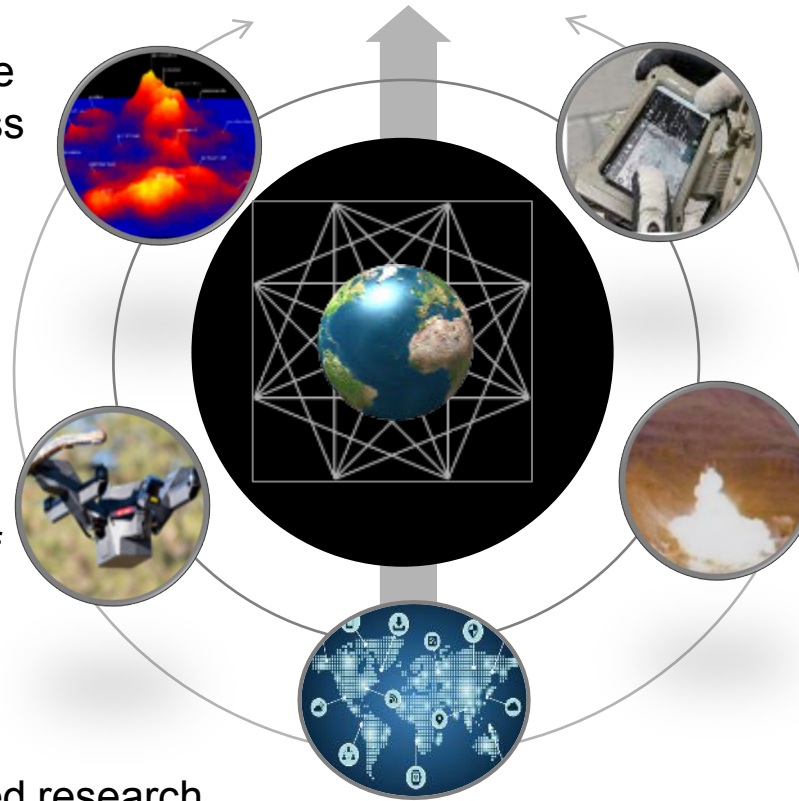
Develops, applies, and transitions innovative technologies to find, characterize and assess WMD threats and Hard & Deeply Buried Targets (HDBTs) in partnership with the Intelligence Community in support of Combatant Commands.

Disrupt and Defeat

Provides Combatant Commanders with improved offensive capabilities in support of counter-proliferation missions to combat WMDs.

Advanced Research

Couples long-range fundamental and applied research with physical, life, and computational sciences to enhance the Offensive CWMD Capability Framework activities in combating emerging WMD threats.



Counterforce Systems

Develops, integrates, demonstrates and transitions CWMD advanced sensors and surveillance and defeat target planning technologies in support of Joint Force operations.

Urgent Solutions

Executes collaborative research and timely capability development to illuminate threat WMD posture and capabilities, develops options to deter, disrupt, prevent WMD development / use, exploits adversary weaknesses and ensures the Joint Force prevails in conflict.

Weapons and Capabilities

Develops offensive weapons and other capabilities to combat WMD while mitigating collateral contamination.

Deter. Prevent. Prevail.

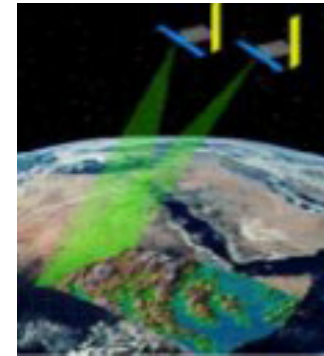
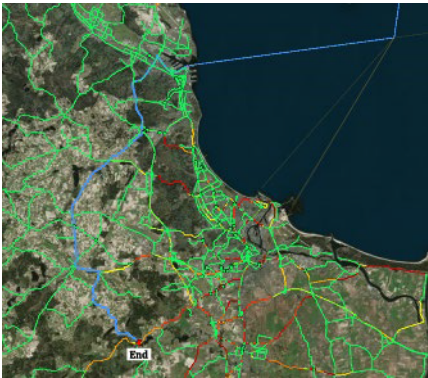
UNCLASSIFIED



UNCLASSIFIED

RD-NT: Nuclear Technologies Department

RD-NT researches, develops, and transitions nuclear weapons effects, survivability, detection, and monitoring capabilities to support and enable an effective nuclear deterrent.



Top NT priorities include Nuclear Modernization and Sustainment; Operating in a Nuclear Environment; Mission Assurance and Risk Mitigation Support; Nuclear Monitoring and Verification; and Forensics.

Deter. Prevent. Prevail.

UNCLASSIFIED



UNCLASSIFIED

RD-NT: Nuclear Technologies Department

Nuclear Weapon Effects

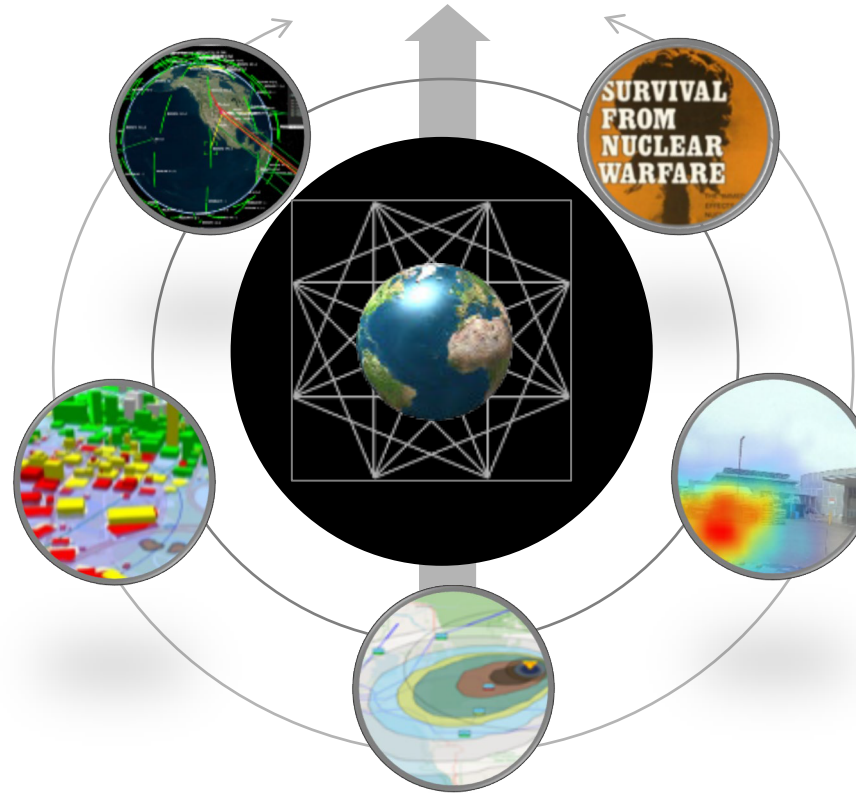
Creates modeling & simulation tools for nuclear targeting support and consequences of execution analyses.

Nuclear Integration

Provides cloud-ready nuclear modeling platform, interfaces and applications & nuclear archives accessibility.

Nuclear Assessments

Develops monitoring and verification, national technical nuclear forensics, and arms control capabilities.



Nuclear Survivability

Provides technologies, standards, historical data, and testing capabilities to ensure that U.S. nuclear and conventional forces survive and fight through adversary nuclear attacks.

Nuclear Detection

Develops nuclear and radiological defense capabilities enabling actionable information to the Joint Force.

Deter. Prevent. Prevail.

UNCLASSIFIED



UNCLASSIFIED

RD-OP: Operations Department

RD-OP integrates DTRA research, development, test and evaluation (RDT&E) operations, activities and investments (OAI) across the RD Departments and the Agency, as well as with external customers.



Top OP priorities include enabling cross-cutting computational capabilities; basic and applied research; technical reachback; CWMD information integration; technology demonstrations; and SBIR / STTR.



UNCLASSIFIED

RD-OP: Operations Department

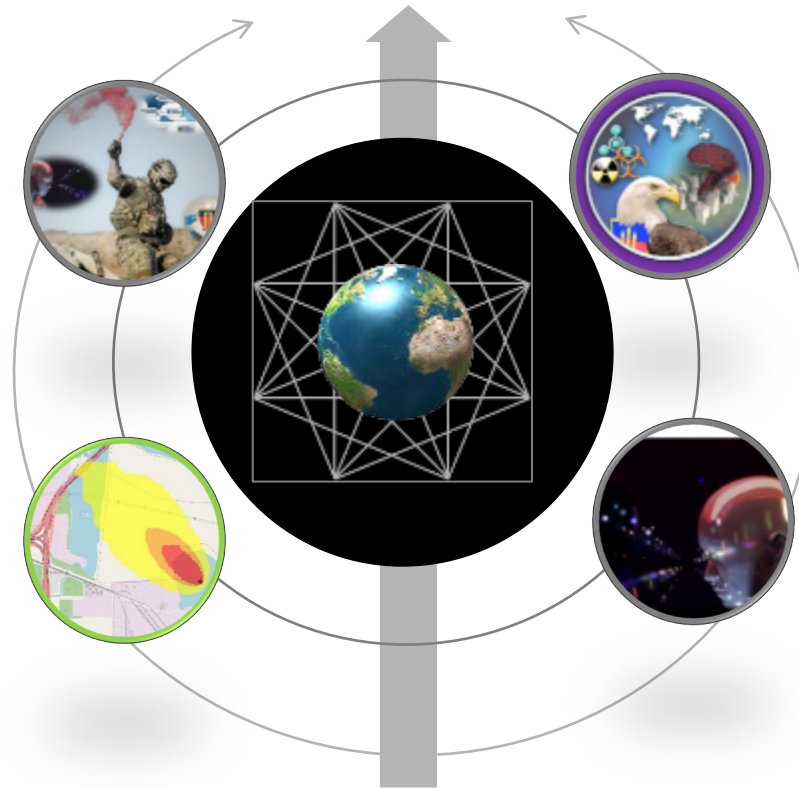
Integration

Works across all RD departments and investments to ensure effective integration in areas including:

- Directorate-wide acquisitions
- Customer request management
- International S&T Cooperation
- Small business (SBIR/STTR)

Technical Reachback

Provides 24/7 manned CBRNE decision support capability for planning, exercise support, operations, and post-event analysis and Serves as the technical operations hub for the Interagency Modeling and Atmospheric Assessment Center (MAAC) events.



Enabling Capabilities

Manages DTRA's basic research program through 2 University Research Alliances (Materials Science in Extreme Environments & Interaction of Ionizing Radiation with Matter) and supports software development through the DTRA Experimentation Laboratory (DEL) and facilitates access to external DoD High Performance Computing (HPC) resources.

Applied Data Solutions

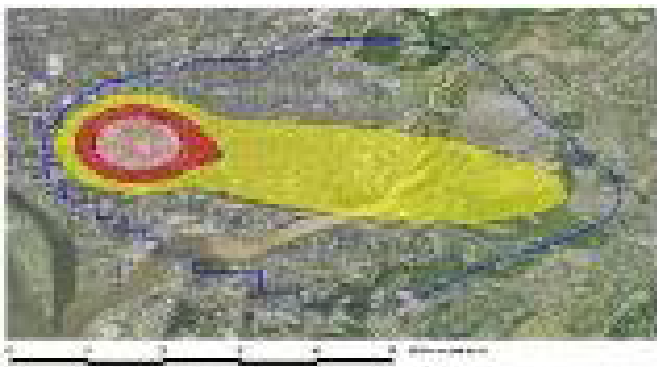
Delivers data visualizations and collaboration technologies to enable the full spectrum of CWMD missions and specializes in the agile development of software solutions tailored to unique CWMD strategic and operational needs.



UNCLASSIFIED

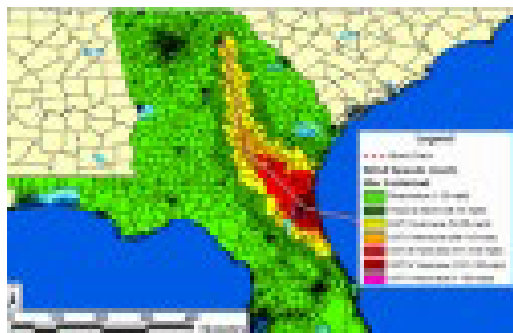
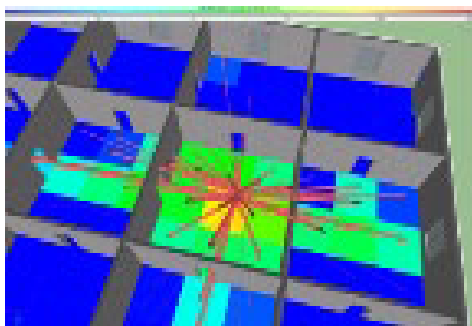
RD-OP: Technical Reachback

Technical Reachback provides 24/7 manned CBRNE subject matter expertise, decision support capability for planning, operations, and post event analysis to OSD, the Combatant Commands, and other U.S. Government partners.



Modeling Tools used by Reachback:

- Atmospheric Plume Modeling
- Waterborne & Natural Hazard Modeling
- Nuclear Modeling
- Infectious Disease Modeling
- Counter Improvised Explosive Device Attack Modeling



Reachback Priorities

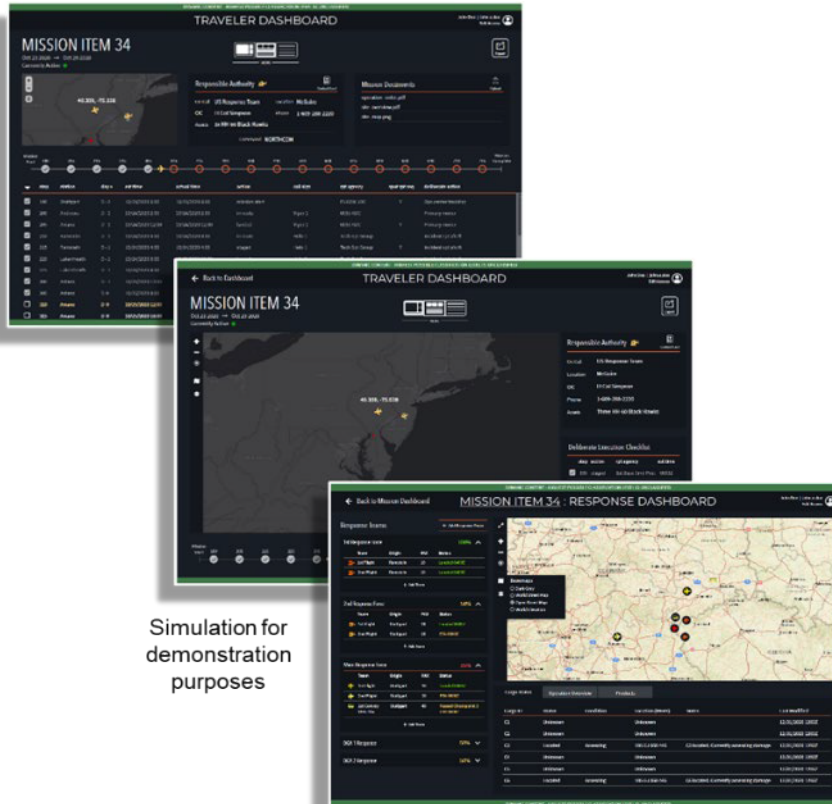
- Operational support
- Enabling activities
- Epidemiological modeling
- Nuclear Weapon Effects Phenomenology
- Post event analysis



UNCLASSIFIED

RD-OP: Applied Data Solutions

ADSD-developed software applications increase situational awareness, enable more informed decision making, and improve CWMD mission success.



Example recent/ongoing projects in support of CCMDs:

- The SHADOW WATCH software application is enhancing EUCOM/USAFE's ability to plan for and respond to WMD contingencies
- WMD Tracker, a CWMD Common Operational Picture hosted on the CENTRIXS-K coalition partner network, supports USFK and Republic of Korea (ROK) forces in coordinating CWMD operations



UNCLASSIFIED

RD-TS: Test and Assessment Department

RD-TS provides objective evaluations of new capabilities to support the DTRA mission and national priorities through tests and assessments.



Top TS Priorities include End to End Testing (Planning, Execution, and Reporting); Mobile Threat Representative Testbeds; and Sensitive Assessments.



UNCLASSIFIED

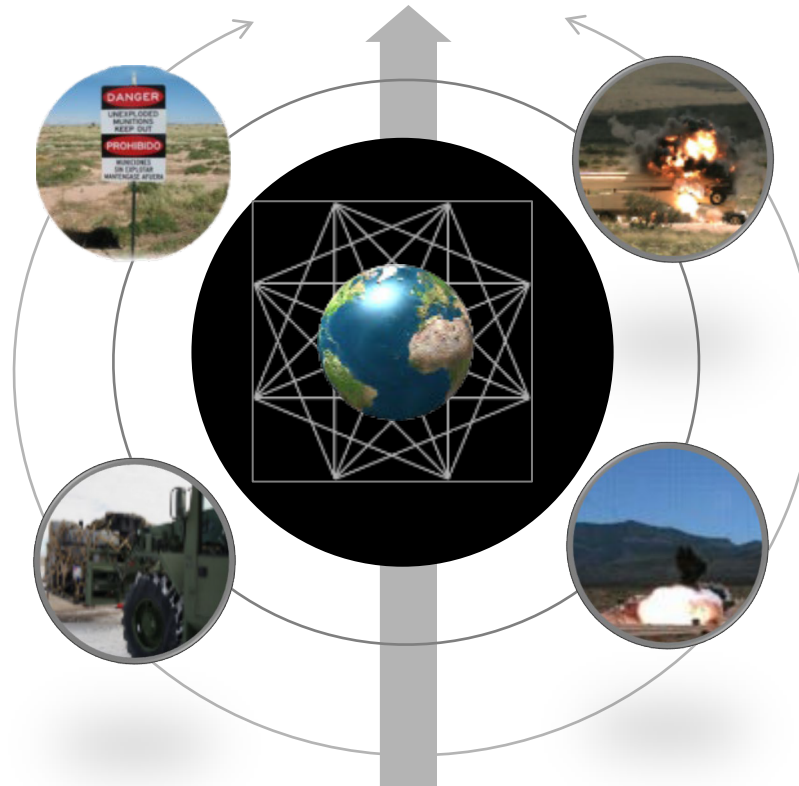
RD-TS: Test and Assessment Department

Environmental & Safety

Eliminates and mitigates hazards in the workplace to reduce or eliminate the exposure of our employees to hazards associated with testing and the construction environment.

Integration & Resource

Ensures effective and efficient use of resources.



Test

Conducts Test & Evaluation to maintain U.S. superiority in countering WMD and emerging threats, mitigate the risks of technology surprise, and respond to the warfighters' urgent requirements.

Sensitive Assessments

Conducts rapid assessments to enable the DoD to deter, prevent, and prevail against WMD-armed adversaries and emerging threats.

Deter. Prevent. Prevail.

UNCLASSIFIED



UNCLASSIFIED

Developing Capabilities to Fight and Win on the CBRN Battlefield

Deliver tools that enable effective targeting of U.S. weapons and inform the consequences of attacks



Nuclear Effects



Conventional Effects

Test concepts and plans through rigorous wargaming

M&S to enable planning and training



24/7 technical analysis of CBRNE questions

24/7 Access to DTRA M&S tools & experts to interpret results



Equip forces to operate effectively on the nuclear battlefield



Mobile Field Kit-CBRN automates collection, sharing, and display of data

MERLIN / VIPER Standoff Radiation Detection

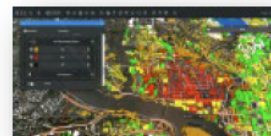


Provide technologies, standards, historical data, and testing to ensure forces can survive and fight

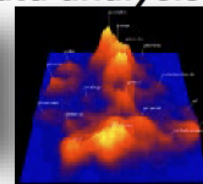


Test bed structure to support full-spectrum testing

Deliver integrated, cloud-ready, AI-enhanced applications and data analysis



Situational Awareness Tools



Protect the U.S. Joint Force with advanced medical countermeasures and



Prophylactic and medical countermeasure treatment options unburden and protect the U.S. Joint Force

Rapid Analysis of Threat Exposure technology allows data from wearable devices to warn of COVID-19 infections prior to the onset of symptoms



UNCLASSIFIED

RD's Contributions to the Stryker NBCRV Sensor Suite Upgrade (SSU)



Unmanned Aerial Vehicle

- Configurable remote network sensors
- Interrogates a chemical or biological cloud

Integrated Standoff

- Chemical sensors
- Machine learning, and algorithm improvements to reduce false alarms for rapid decision making

MERLIN / VIPER

- Provides isotope identification
- On-the-move detection, and threat localization
- Net-capable crew dosimeter

Three Departments within RD have contributed to the SSU Army Program of Record



DTRA RD Summary

DTRA RD Provides:

- Science, technology, and capability development investments that maintain the U.S. military's technological superiority to:
 - Deter strategic attack against the United States and its allies
 - Prevent, reduce, and counter WMD and emerging threats
 - Prevail against WMD-armed adversaries in crisis and conflict
- An integrated and coordinated portfolio that leverages the DoD, Interagency, and international partners providing support to our U.S. Joint Forces.
- Comprehensive R&D investment to increase agility, respond to new or changing Combatant Command requirements, as well as national, and DoD CWMD priorities

UNCLASSIFIED



www.dtra.mil



Keyword: DTRA



Deter. Prevent. Prevail.

UNCLASSIFIED